

APR 27 2005

Department of Environmental Quality
Kalispell Regional Office

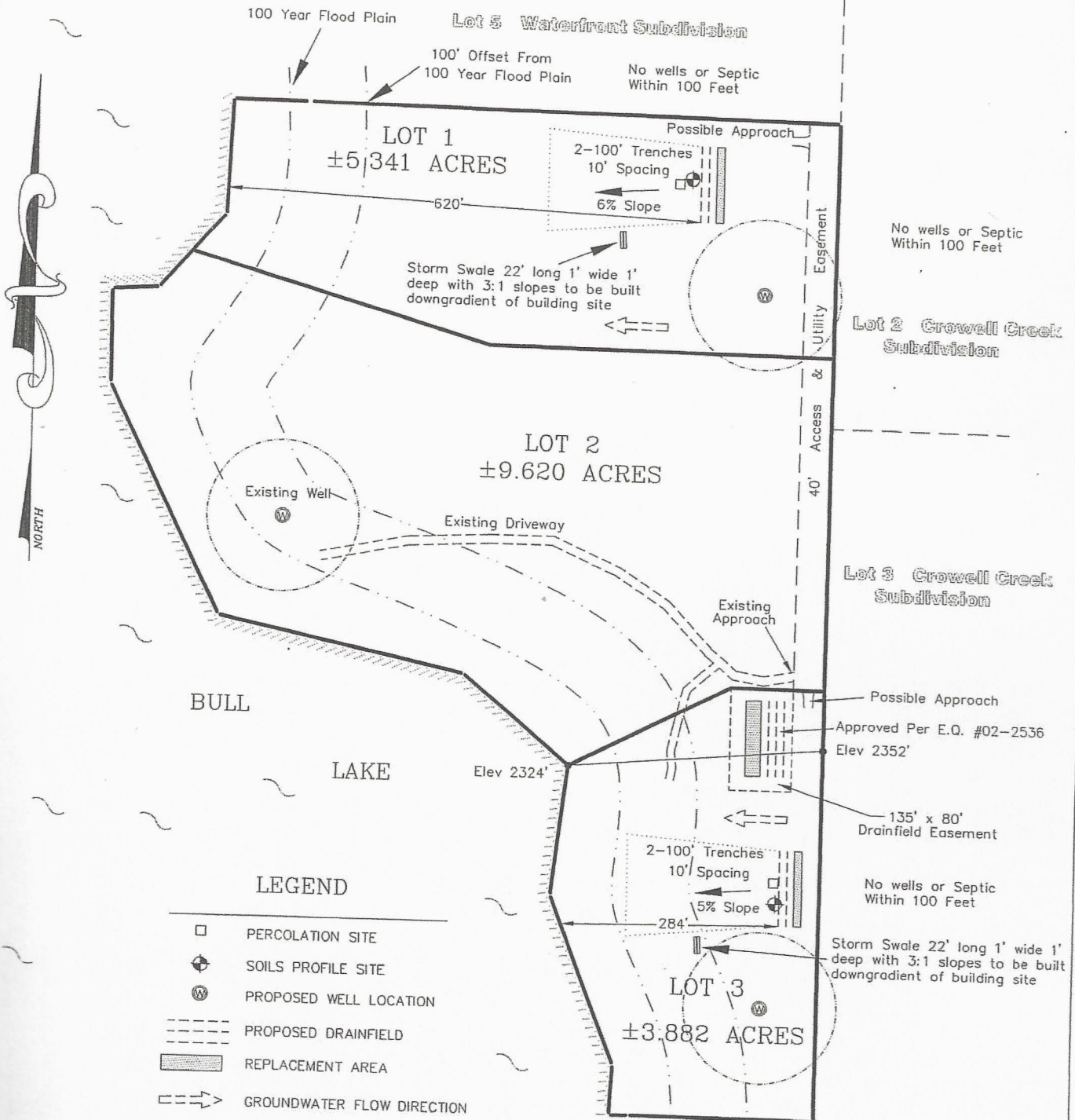
LOT LAYOUT

Cedar Cays Subdivision

FOR: POTTER

DATE: JANUARY 2005

Sec 17, T 29N., R 33W.



KSI
KOOTENAI SURVEYORS INC.
P.O. BOX 393
LIBBY, MT 59923
(406)293-4354

1 INCH = 200 FEET

APPROVED
Montana Department of
Environmental Quality
Permitting and Compliance Division
Kurt Selvig 6/13/05
Reviewer Date